

# MASTERPIECE OVER THE PARK

## THE PARK BELVEDERE CONDOMINIUM - APARTMENT 15C

CAROL E. LEVY  
REAL ESTATE



# THE PARK BELVEDERE

## 101 WEST 79<sup>TH</sup> STREET

### APARTMENT 15C

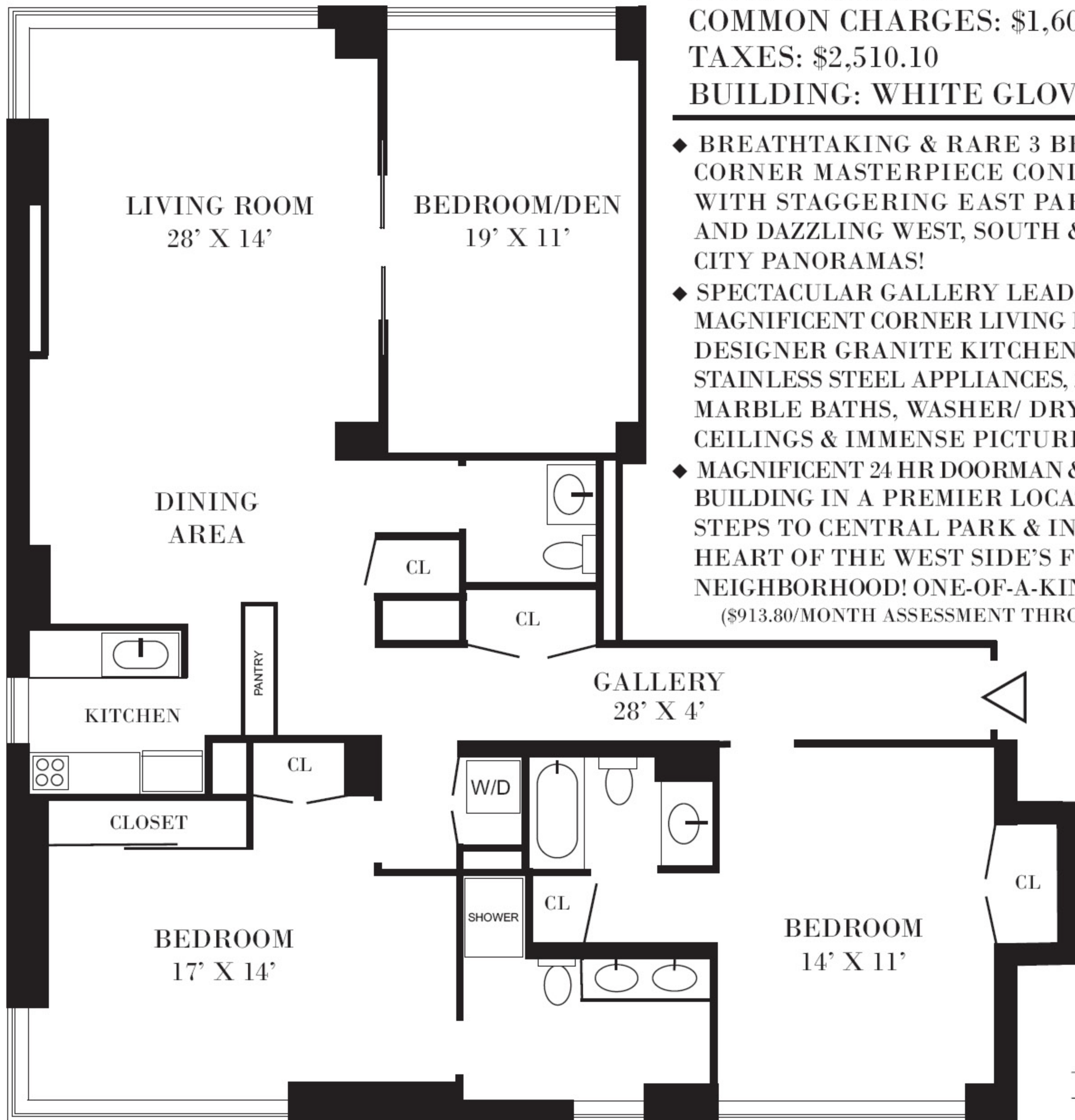
EASTERN EXPOSURE - STAGGERING PARK AND CITY PANORAMAS

PRICE: \$4,250,000

COMMON CHARGES: \$1,602.10

TAXES: \$2,510.10

BUILDING: WHITE GLOVE CONDO



- ◆ BREATHTAKING & RARE 3 BEDROOM CORNER MASTERPIECE CONDOMINIUM WITH STAGGERING EAST PARK VIEWS AND DAZZLING WEST, SOUTH & NORTH CITY PANORAMAS!
- ◆ SPECTACULAR GALLERY LEADS TO GRAND, MAGNIFICENT CORNER LIVING ROOM, NEW DESIGNER GRANITE KITCHEN WITH TOP STAINLESS STEEL APPLIANCES, 2 1/2 SUPERB MARBLE BATHS, WASHER/ DRYER, 9 FOOT CEILINGS & IMMENSE PICTURE WINDOWS!
- ◆ MAGNIFICENT 24 HR DOORMAN & CONCIERGE BUILDING IN A PREMIER LOCATION, JUST STEPS TO CENTRAL PARK & IN THE HEART OF THE WEST SIDE'S FINEST NEIGHBORHOOD! ONE-OF-A-KIND TROPHY!  
(913.80/MONTH ASSESSMENT THROUGH 6/2019)

WESTERN EXPOSURE - PANORAMIC CITY VIEWS

◆ ALL DIMENSIONS ARE APPROXIMATE

**EXCLUSIVE BROKER: CAROL E. LEVY 212.580.7270**

CAROL@CAROLELEVY.COM

**REBNY**  
REAL ESTATE BOARD OF NEW YORK

FAX: 212.580.0039

WWW.CAROLELEVY.COM