

CAROLE . LEVY

L I C E N S E D R E A L E S T A T E B R O K E R

THE PARK ROYAL

23 WEST 73RD STREET - APT. 515



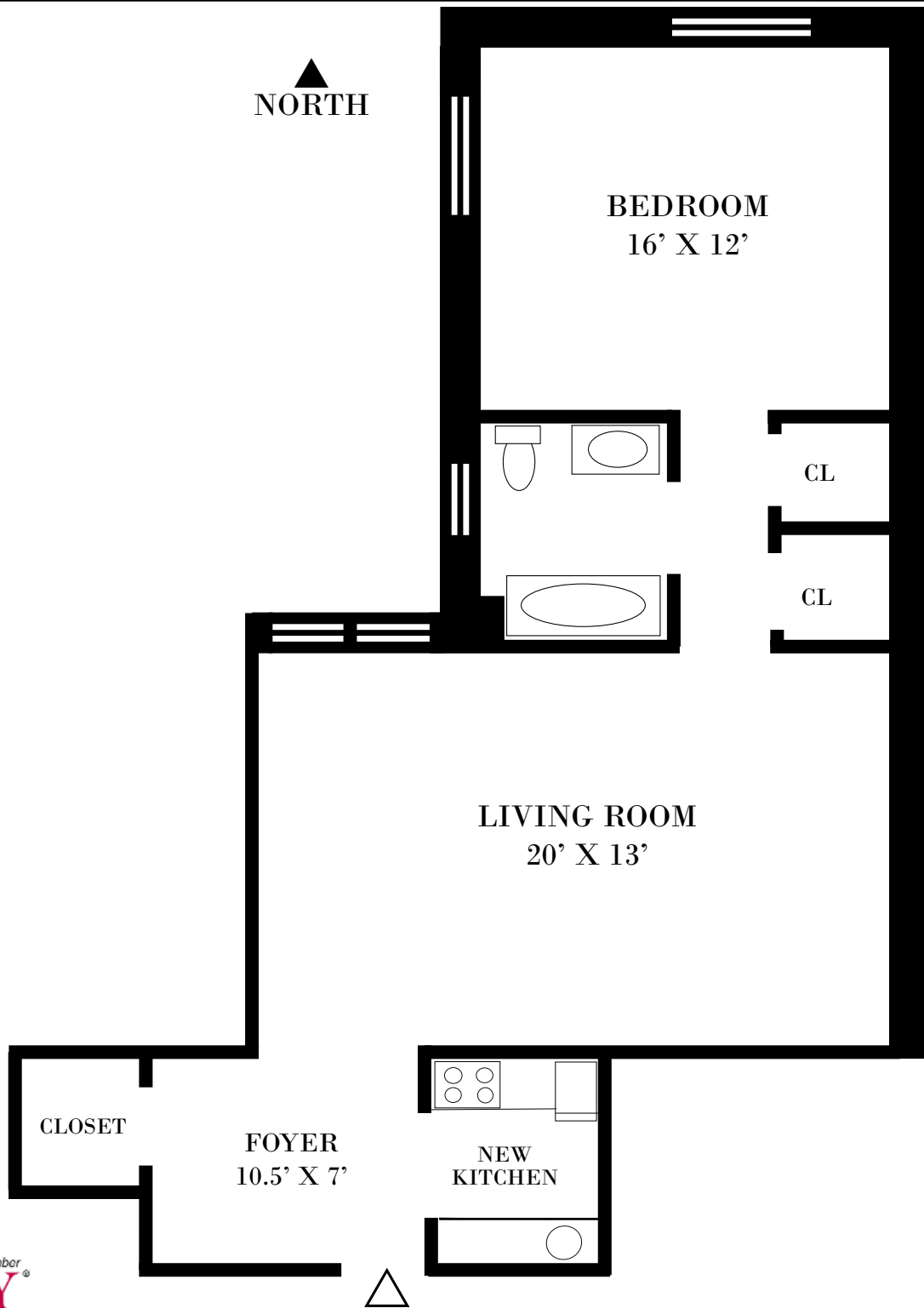
PRICE: \$4,000 INCLUDING ELECTRIC!

- ◆ SPECTACULAR & SPACIOUS 1 BEDROOM WITH SUPERB LAYOUT.. STEPS FROM CENTRAL PARK!
- ◆ ELEGANT LIVING ROOM, EXQUISITE FOYER, NEW DESIGNER KIT, MARBLE BATH, HIGH CEIL!
- ◆ MAGNIFICENT PREWAR 24 HR DRMN & CONCIERGE BLDG WITH NY SPORT'S CLUB, LAUNDRY, BIKE ROOM, PLAYRM & STORAGE! PIED-A-TERRES, GUARANTORS, PETS OK! **NO BOARD APPROVAL!**

CAROL@CAROLELEVY.COM PHONE 212.580.7270 FAX 212.580.0039
WWW.CAROLELEVY.COM

THE PARK ROYAL

23 WEST 73RD STREET



Proud Member
REBNY[®]
REAL ESTATE BOARD OF NEW YORK

◆ ALL DIMENSIONS ARE APPROXIMATE

EXCLUSIVE BROKER: CAROL E. LEVY 212.580.7270

CAROL@CAROLELEVY.COM PHONE 212.580.7270 FAX 212.580.0039
WWW.CAROLELEVY.COM