

THE PARK BELVEDERE

101 WEST 79TH STREET

APARTMENT 15C

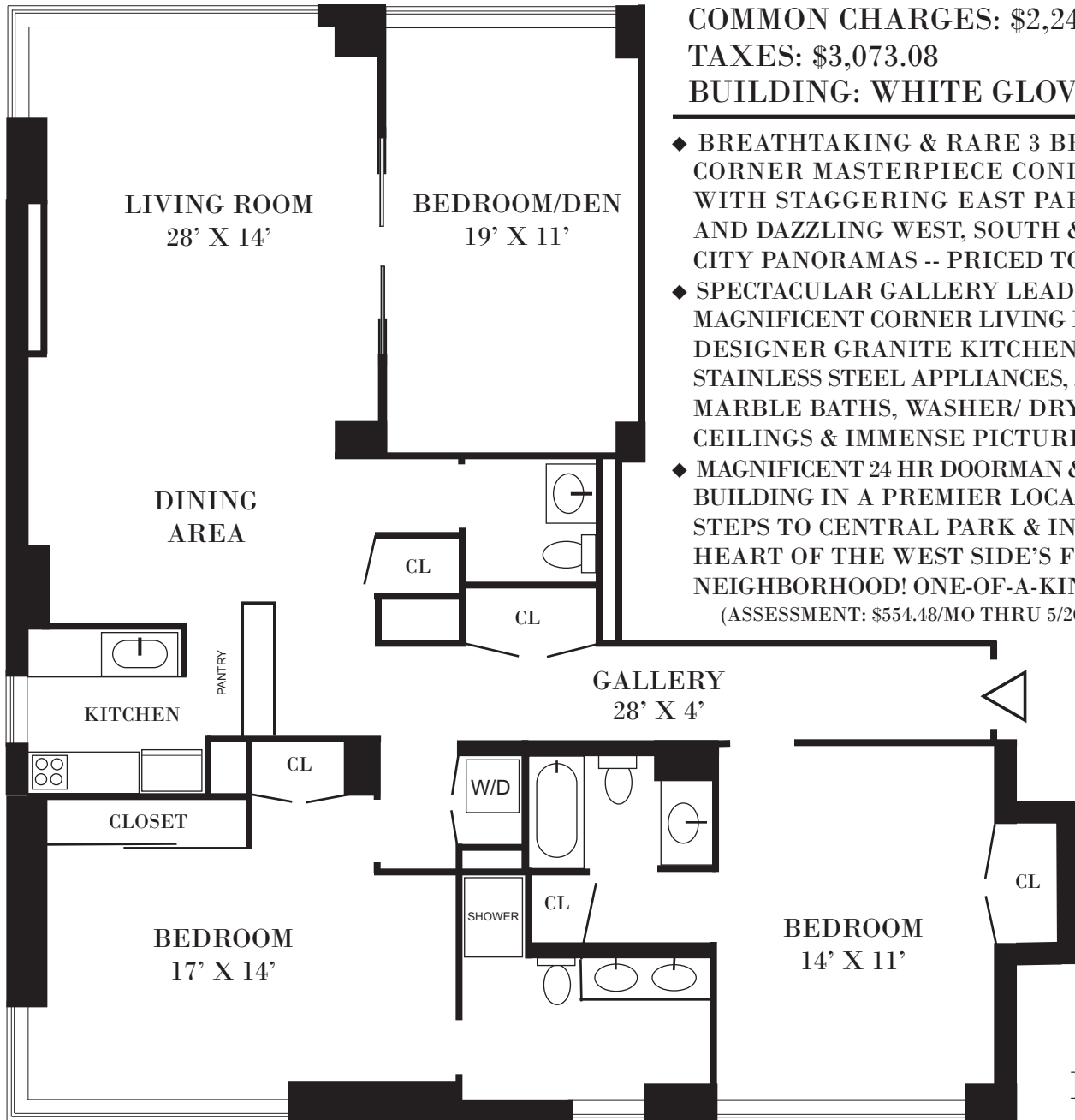
EASTERN EXPOSURE - STAGGERING PARK AND CITY PANORAMAS

PRICE: \$3,695,000

COMMON CHARGES: \$2,243.88

TAXES: \$3,073.08

BUILDING: WHITE GLOVE CONDO



- ◆ BREATH TAKING & RARE 3 BEDROOM CORNER MASTERPIECE CONDOMINIUM WITH STAGGERING EAST PARK VIEWS AND DAZZLING WEST, SOUTH & NORTH CITY PANORAMAS -- PRICED TO SELL!
- ◆ SPECTACULAR GALLERY LEADS TO GRAND, MAGNIFICENT CORNER LIVING ROOM, NEW DESIGNER GRANITE KITCHEN WITH TOP STAINLESS STEEL APPLIANCES, 2 1/2 SUPERB MARBLE BATHS, WASHER/ DRYER, 9 FOOT CEILINGS & IMMENSE PICTURE WINDOWS!
- ◆ MAGNIFICENT 24 HR DOORMAN & CONCIERGE BUILDING IN A PREMIER LOCATION, JUST STEPS TO CENTRAL PARK & IN THE HEART OF THE WEST SIDE'S FINEST NEIGHBORHOOD! ONE-OF-A-KIND TROPHY!
(ASSESSMENT: \$554.48/MO THRU 5/2025 + \$46.33)

WESTERN EXPOSURE - PANORAMIC CITY VIEWS



◆ ALL DIMENSIONS ARE APPROXIMATE

WWW.CAROLELEVY.COM