



UNPARALLELED PARK PANORAMAS

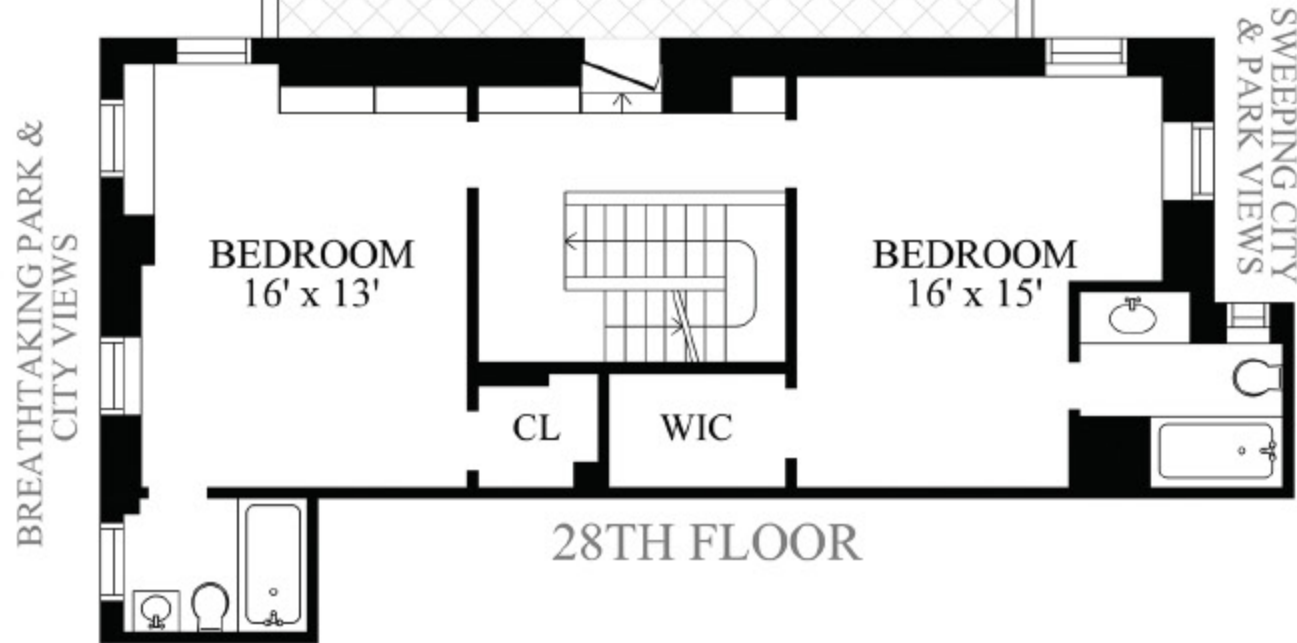


TERRACE
28' x 14'

THE OLIVER CROMWELL

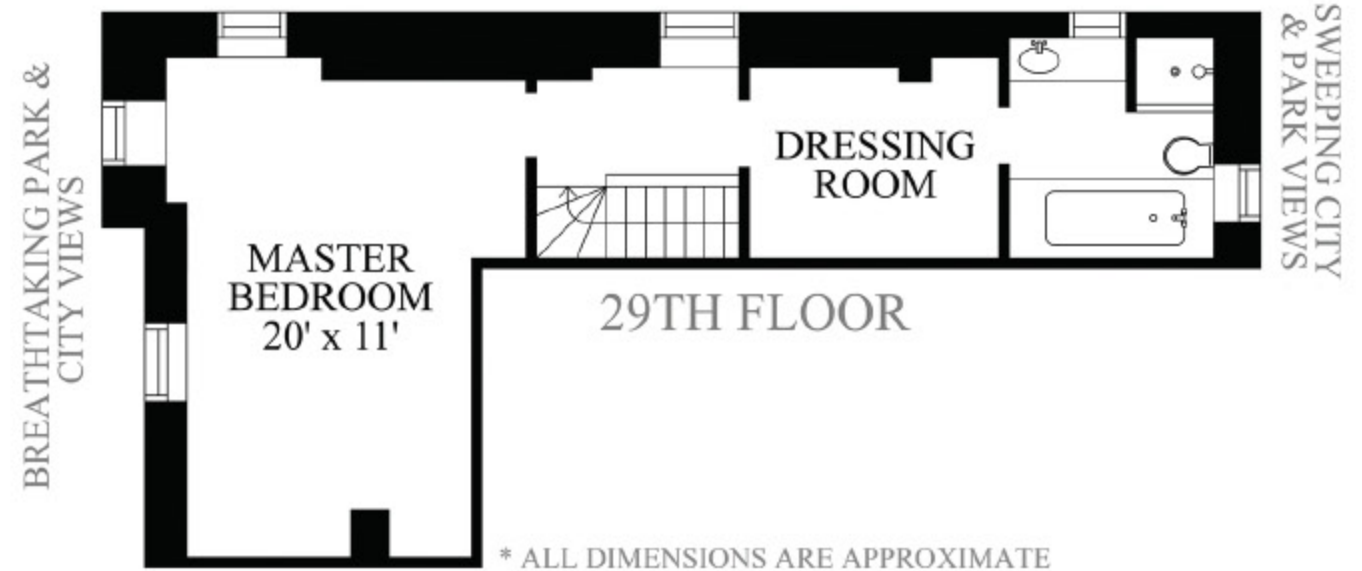
12 WEST 72ND STREET - PENTHOUSE B

EXISTING PLAN



28TH FLOOR

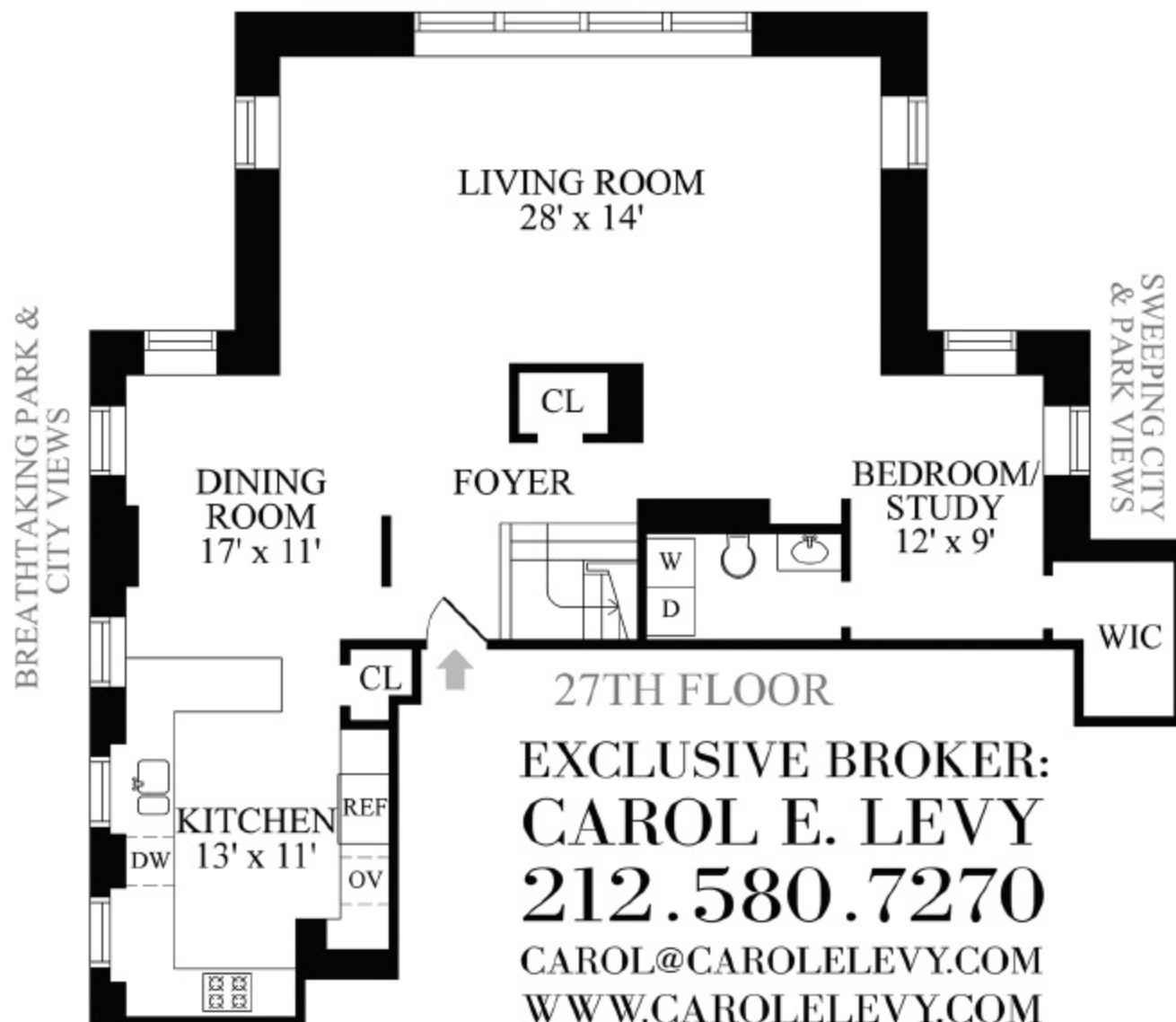
UNPARALLELED PARK PANORAMAS



29TH FLOOR

* ALL DIMENSIONS ARE APPROXIMATE

UNPARALLELED PARK PANORAMAS



LIVING ROOM
28' x 14'

DINING ROOM
17' x 11'

KITCHEN
13' x 11'

FOYER

BEDROOM/
STUDY
12' x 9'

EXCLUSIVE BROKER:
CAROL E. LEVY
212.580.7270
CAROL@CAROLELEVY.COM
WWW.CAROLELEVY.COM

PRICE: \$6,995,000

MAINTENANCE: \$6,423

FINANCING: 75%

BUILDING: LUXURY DOORMAN

- EXTRAORDINARY MAJESTIC LAYOUT
- BREATHTAKING PARK & CITY PANORAMAS
- SPECTACULAR & HUGE TERRACE
- DAZZLING EAST, SOUTH & NORTH EXPOSURES
- MAGNIFICENT SINGLE PANE PICTURE WINDOWS
- SOARING 11 FOOT CEILINGS
- LARGE WINDOWED KITCHEN
- CENTRAL AIR-CONDITIONING
- BEAUTIFUL HARDWOOD FLOORS
- WASHER/DRYER
- PET FRIENDLY
- BICYCLE & STORAGE ROOM
- CENTRAL LAUNDRY
- LIVE-IN SUPERINTENDENT
- ICONIC PREWAR DOORMAN BUILDING
- FINEST WEST SIDE LOCATION OFF CPW



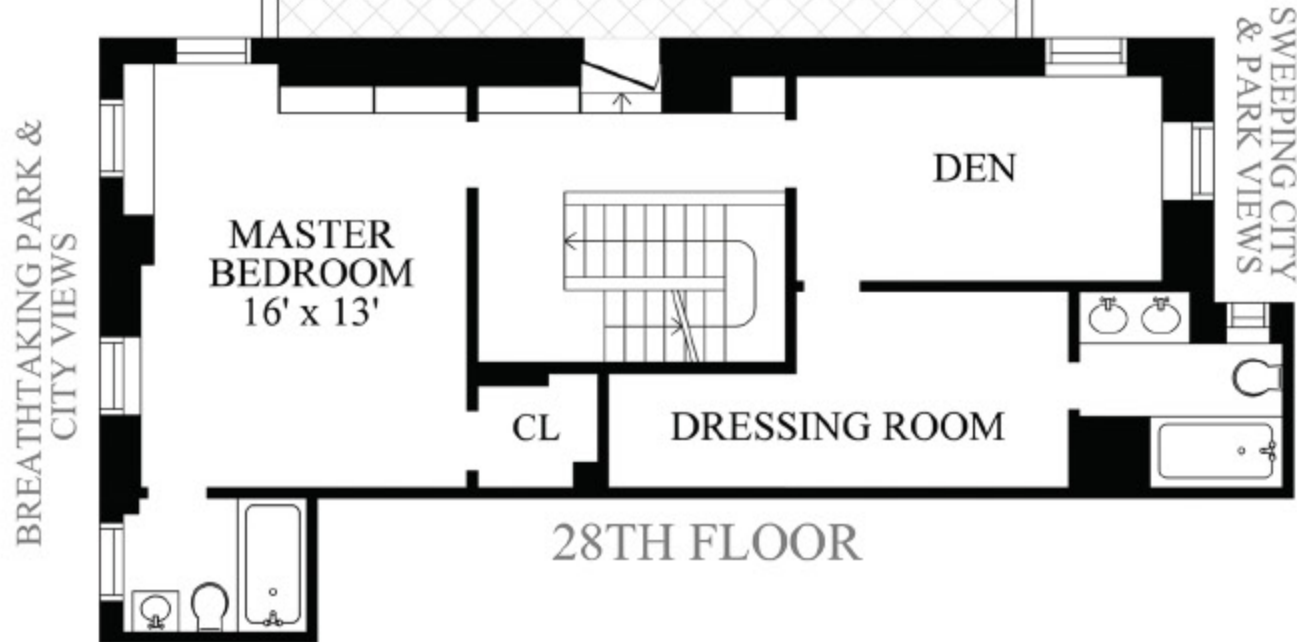
UNPARALLELED PARK PANORAMAS



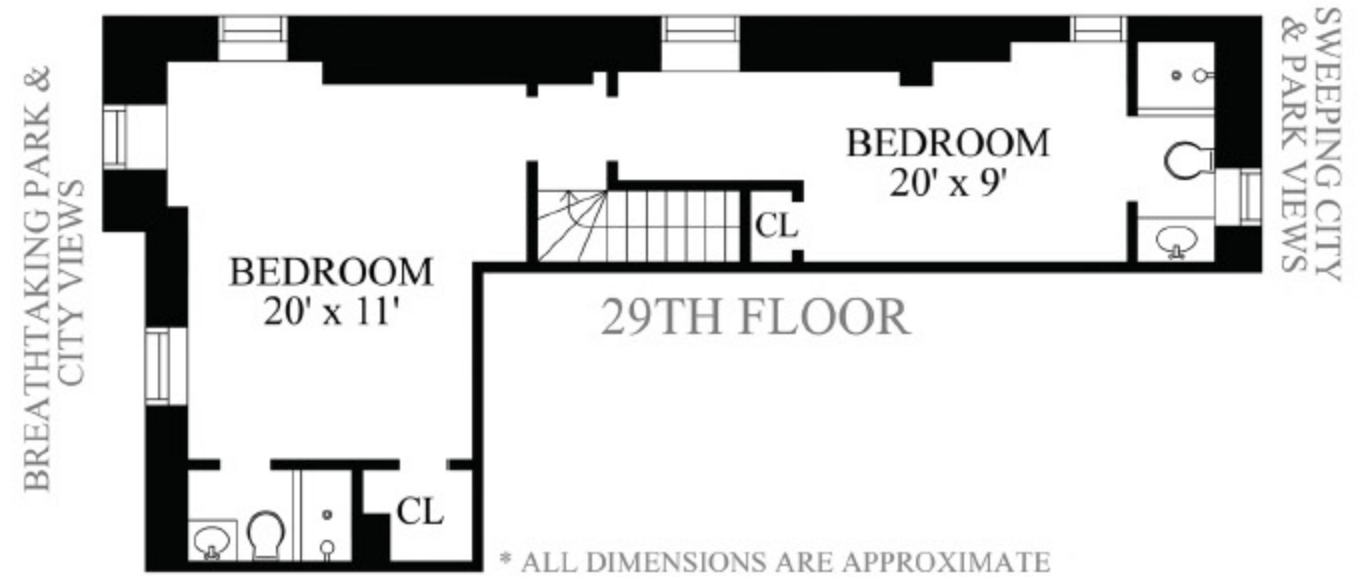
THE OLIVER CROMWELL

12 WEST 72ND STREET - PENTHOUSE B

ALTERNATE PLAN 1

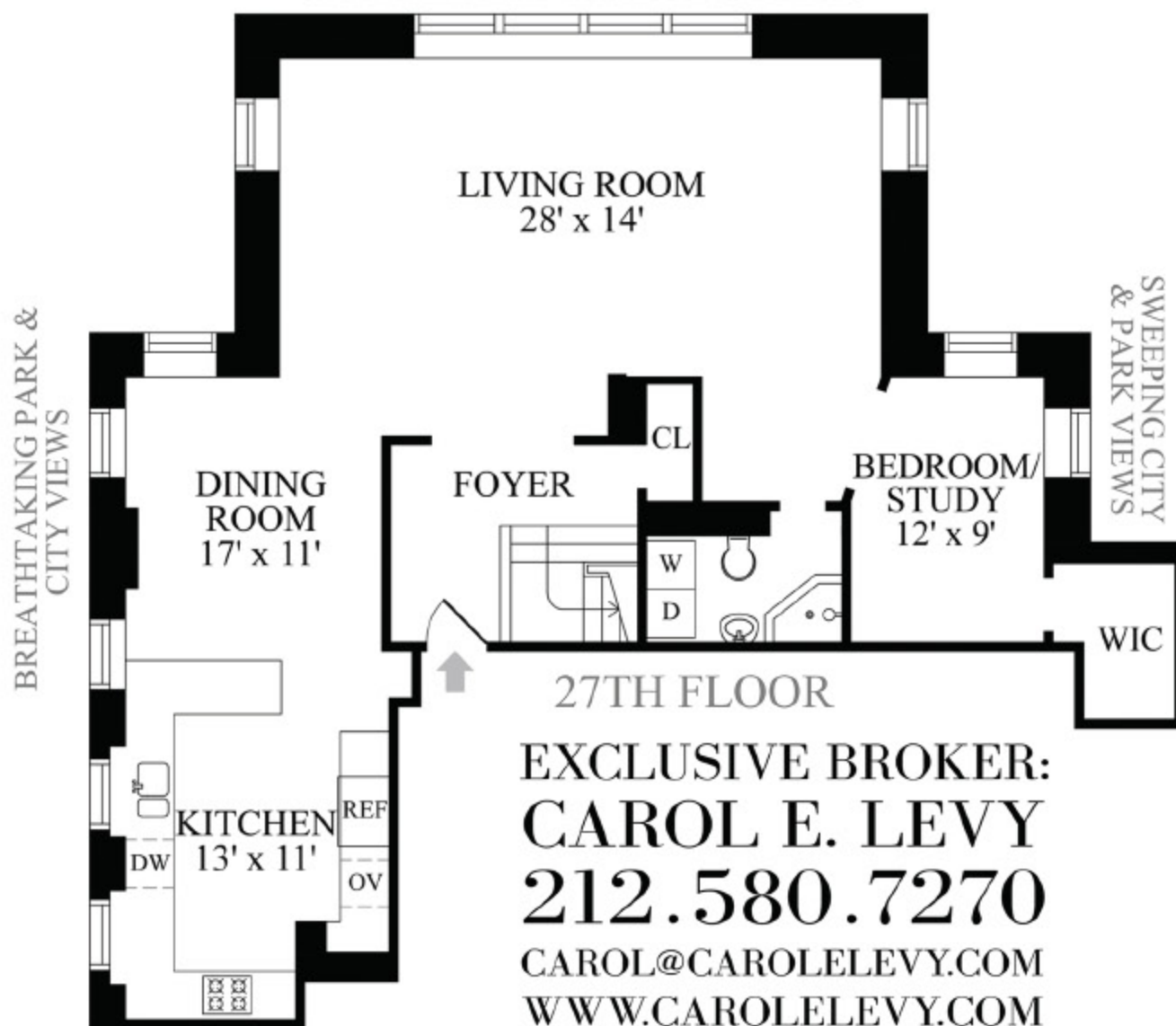


UNPARALLELED PARK PANORAMAS



* ALL DIMENSIONS ARE APPROXIMATE

UNPARALLELED PARK PANORAMAS



EXCLUSIVE BROKER:
CAROL E. LEVY
212.580.7270
CAROL@CAROLELEVY.COM
WWW.CAROLELEVY.COM



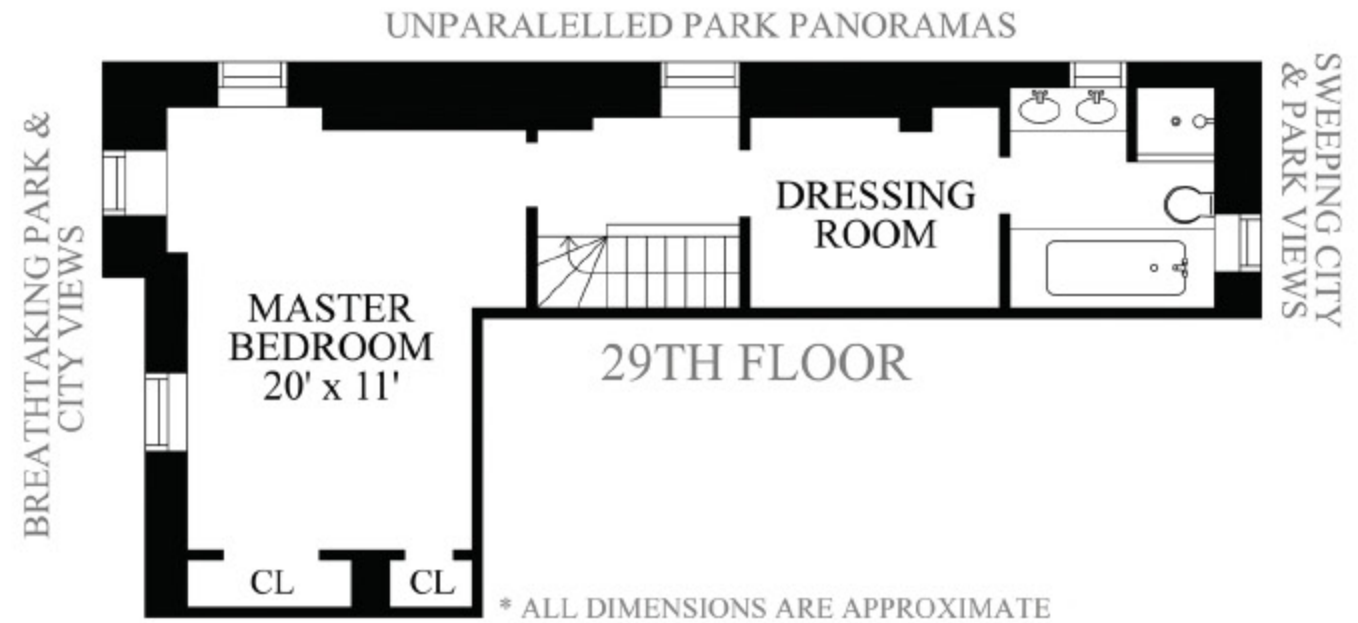
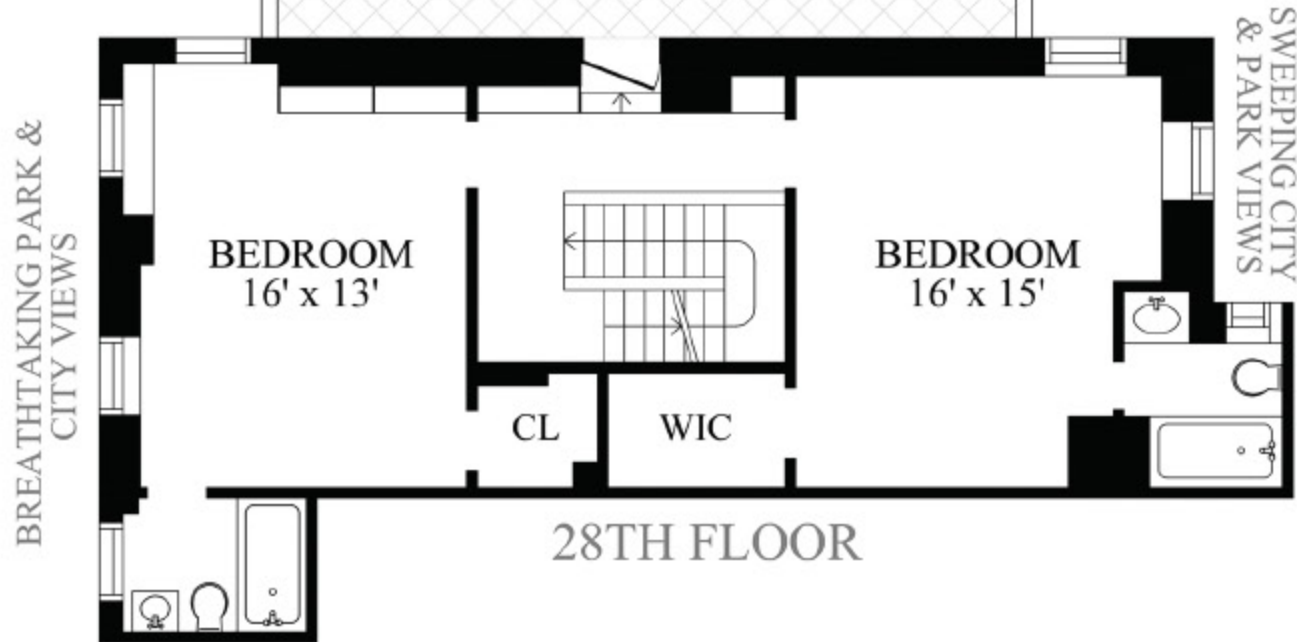
UNPARALLELED PARK PANORAMAS



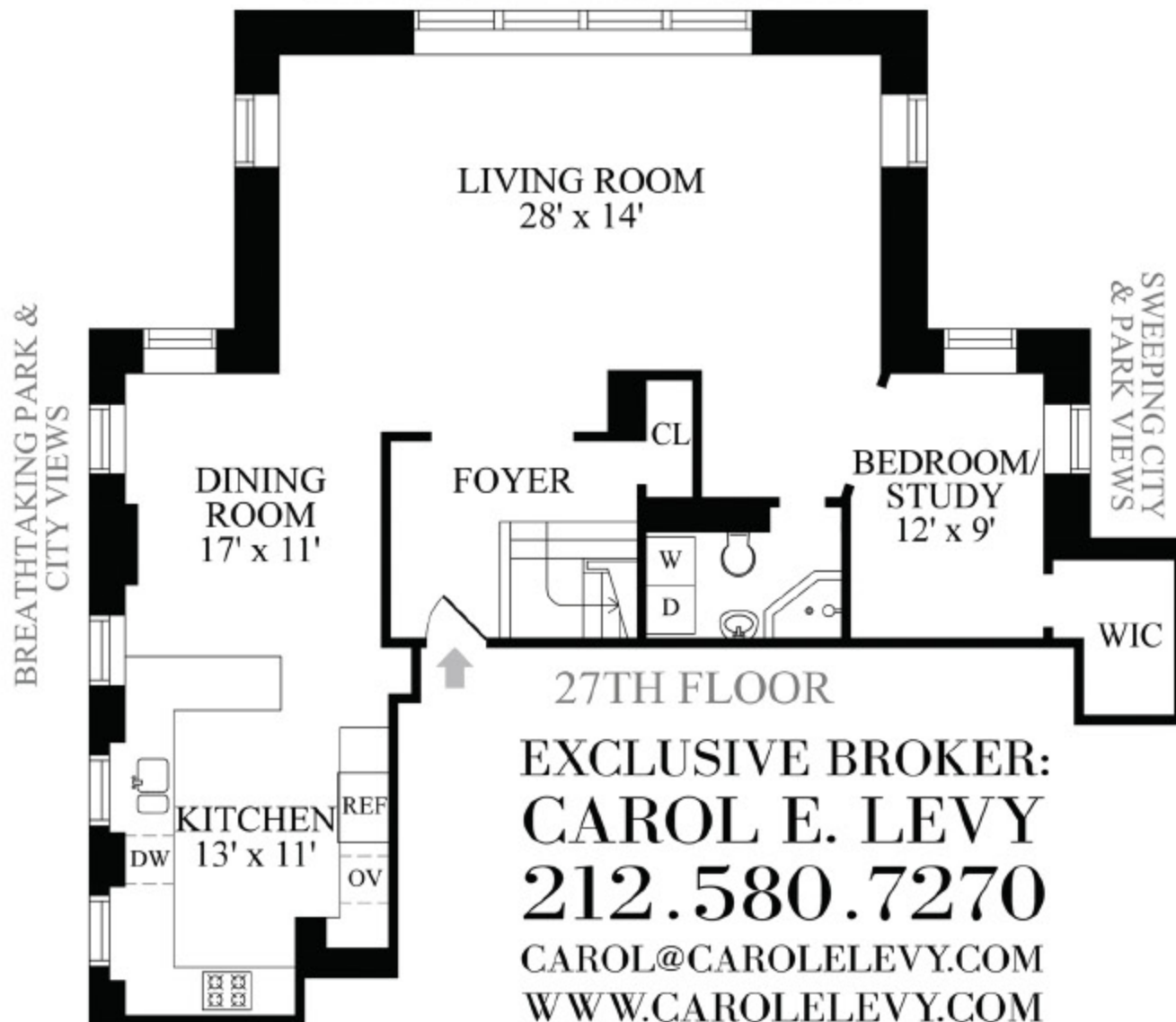
THE OLIVER CROMWELL

12 WEST 72ND STREET - PENTHOUSE B

ALTERNATE PLAN 2



UNPARALLELED PARK PANORAMAS



EXCLUSIVE BROKER:
CAROL E. LEVY
212.580.7270
CAROL@CAROLELEVY.COM
WWW.CAROLELEVY.COM