

# UNPARALLELED PARK ROYAL + TERRACE



CAROLE. LEVY  
REAL ESTATE



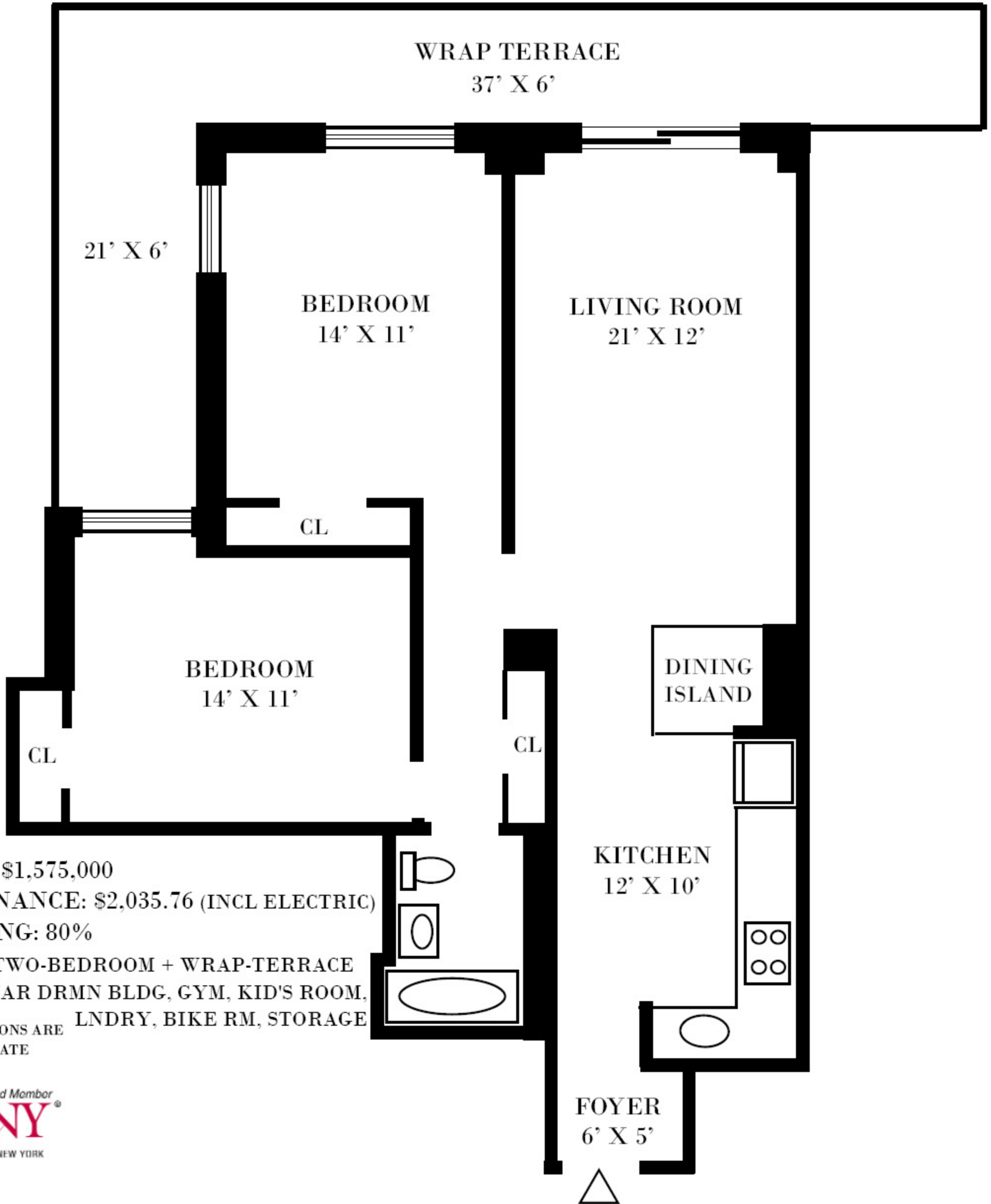


# THE PARK ROYAL

## 23 WEST 73RD STREET

### APARTMENT 114

▲  
NORTH



ASKING: \$1,575,000

MAINTENANCE: \$2,035.76 (INCL ELECTRIC)

FINANCING: 80%

- TROPHY, MINT TWO-BEDROOM + WRAP-TERRACE
- PREMIER PREWAR DRMN BLDG, GYM, KID'S ROOM, LNDRY, BIKE RM, STORAGE

◆ ALL DIMENSIONS ARE APPROXIMATE

Proud Member  
**REBNY**  
REAL ESTATE BOARD OF NEW YORK

WWW.CAROLELEVY.COM